

BUSINESS PLAN

2024 -2027

MEANINGFUL PATHWAYS

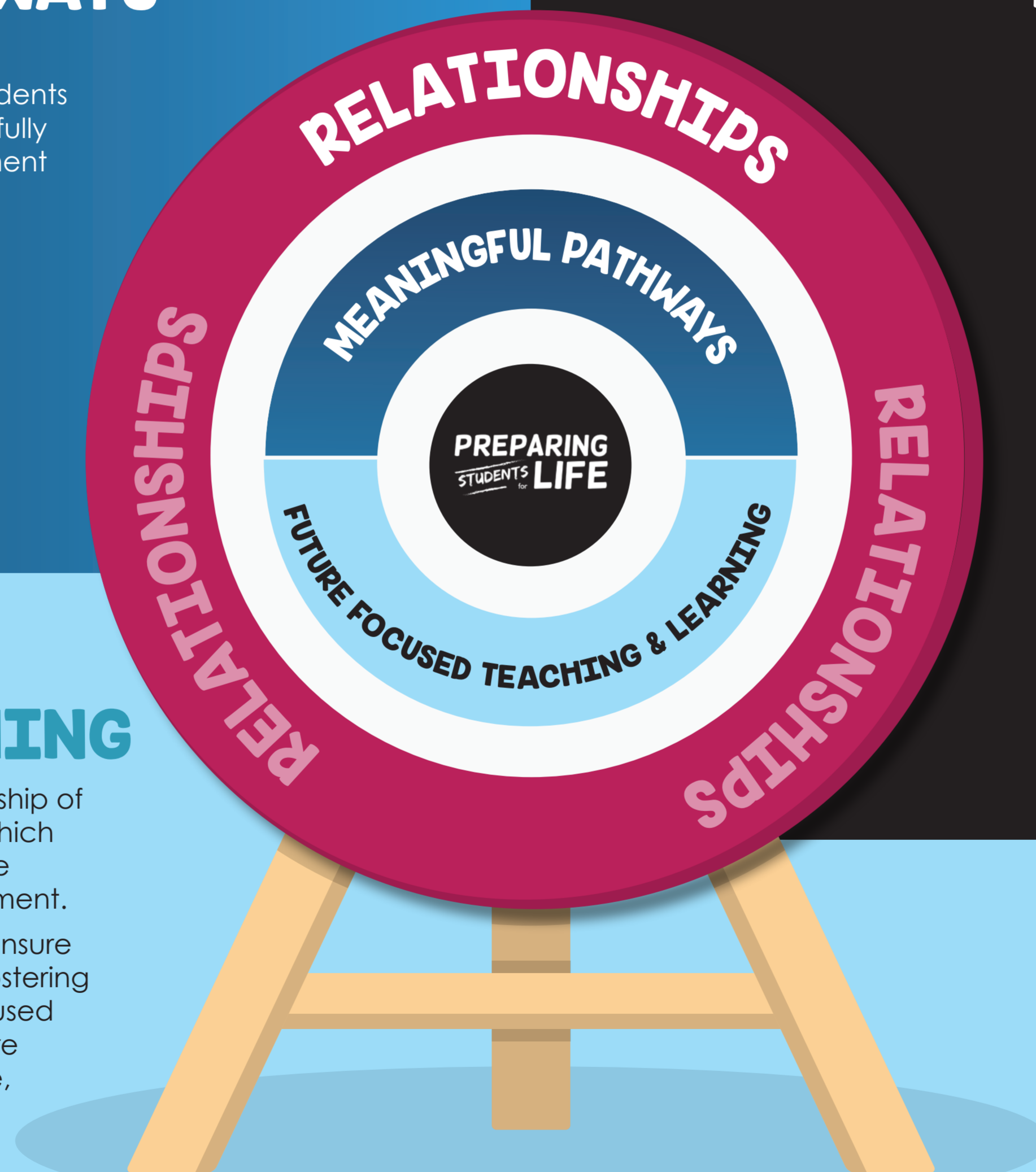
At Manea Senior College, we recognise our broader role as a transitional space where students learn the transferable skills required to successfully navigate their future worlds of study, employment and life. Our work supports students to:

- Understand their future pathways, and what they require to get there;
- Take part in a wide offering of educational experiences that facilitate future pathways; and
- Obtain the levels of achievement, qualifications and skills required to successfully take their next step.

FUTURE FOCUSED TEACHING & LEARNING

Empowering students and staff to take ownership of their learning, by providing an environment which creates a culture of deep thinking, knowledge acquisition and opportunities for skill development.

We engage with the broader community to ensure relevant and real-world learning along with fostering global responsibility. By embracing future focused teaching and experiential learning we prepare students for opportunities beyond the College, with transferrable skills.



RELATIONSHIPS

Strong relationships with students, staff, and community are essential. Through communication and active engagement, we aim to create a supportive learning environment that fosters growth and long-term success with a focus on:

Student-Student Relationships

What is it about my connections to fellow students that makes me want to attend College each day?

Staff-Student Relationships

What is it about my relationships with students that make them want to see me each day?

Staff-Staff Relationships

What is it about my relationships with my colleagues that makes them value working with me each day?

College-Community Relationships

What is it about our relationship with the wider College community that fosters connection to the real world?

